

If you are reading this electronically, the Council has saved **£xx.xx** on printing. For more information on the Modern.gov paperless app, contact Democratic Services

# Merton Council

## Children and Young People

### Overview and Scrutiny

#### Panel



Date: 15 March 2022

Time: 7.15 pm

Venue: Council chamber - Merton Civic Centre, London Road, Morden SM4 5DX

#### AGENDA

Page Number

- |   |  |        |
|---|--|--------|
| 1 | Apologies for absence                            |        |
| 2 | Declarations of pecuniary interest               |        |
| 3 | Minutes of the previous meeting                  |        |
| 4 | Apprenticeships in Merton - To follow            |        |
| 5 | Update on Covid 19 in Merton                     | 1 - 14 |
| 6 | School Standards Report - To follow              |        |
| 7 | Departmental Update Report - To follow           |        |
| 8 | Performance Monitoring Report - To follow        |        |
| 9 | Topic Suggestions for the 2022-23 work programme |        |

---

**This is a public meeting – members of the public are very welcome to attend.  
The meeting room will be open to members of the public from 7.00 p.m.**

For more information about the work of this and other overview and scrutiny panels, please telephone 020 8545 4035 or e-mail [scrutiny@merton.gov.uk](mailto:scrutiny@merton.gov.uk). Alternatively, visit [www.merton.gov.uk/scrutiny](http://www.merton.gov.uk/scrutiny)

Press enquiries: [communications@merton.gov.uk](mailto:communications@merton.gov.uk) or telephone 020 8545 3483 or 4093

Email alerts: Get notified when agendas are published  
[www.merton.gov.uk/council/committee.htm?view=emailer](http://www.merton.gov.uk/council/committee.htm?view=emailer)

## Public Information

### Attendance at meetings

The public are welcome to attend meetings of the Council. Seating in the public gallery is limited and offered on a first come first served basis.

### Audio/Visual recording of meetings

The Council will film meetings held in the Council Chamber for publication on the website. If you would like to film or record any meeting of the Council held in public, please read the Council's policy [here](#) or contact [democratic.services@merton.gov.uk](mailto:democratic.services@merton.gov.uk) for more information.

### Mobile telephones

Please put your mobile telephone on silent whilst in the meeting.

### Access information for the Civic Centre



- Nearest Tube: Morden (Northern Line)
- Nearest train: Morden South, South Merton (First Capital Connect)
- Tramlink: Morden Road or Phipps Bridge (via Morden Hall Park)
- Bus routes: 80, 93, 118, 154, 157, 163, 164, 201, 293, 413, 470, K5

Further information can be found [here](#)

### Meeting access/special requirements

The Civic Centre is accessible to people with special access requirements. There are accessible toilets, lifts to meeting rooms, disabled parking bays and an induction loop system for people with hearing difficulties. For further information, please contact [democratic.services@merton.gov.uk](mailto:democratic.services@merton.gov.uk)

### Fire alarm

If the fire alarm sounds, either intermittently or continuously, please leave the building immediately by the nearest available fire exit without stopping to collect belongings. Staff will direct you to the exits and fire assembly point. If you are unable to use the stairs, a member of staff will assist you. The meeting will reconvene if it is safe to do so, otherwise it will stand adjourned.

### Electronic agendas, reports and minutes

Copies of agendas, reports and minutes for council meetings can also be found on our website. To access this, click <https://www.merton.gov.uk/council-and-local-democracy> and search for the relevant committee and meeting date.

Agendas can also be viewed online in the Borough's libraries and on the Mod.gov paperless app for iPads, Android and Windows devices.

## Children and Young People Overview and Scrutiny Panel membership

### Councillors:

Sally Kenny (Chair)  
Hayley Ormrod (Vice-Chair)  
Stan Anderson  
Omar Bush  
Nick Draper  
Edward Foley  
Joan Henry  
James Holmes  
Russell Makin  
Dennis Pearce

### Co-opted Representatives

Uzma Ahmad, Parent Governor  
Representative  
Mansoor Ahmad, Parent Governor  
Representative Secondary and Special  
Sectors  
Roz Cordner, Church of England Diocese  
Dr Oona Stannard, Catholic Diocese

### Substitute Members:

Thomas Barlow  
Andrew Howard  
Carl Quilliam  
Dickie Wilkinson

### Note on declarations of interest

Members are advised to declare any Disclosable Pecuniary Interest in any matter to be considered at the meeting. If a pecuniary interest is declared they should withdraw from the meeting room during the whole of the consideration of that matter and must not participate in any vote on that matter. For further advice please speak with the Managing Director, South London Legal Partnership.

### What is Overview and Scrutiny?

Overview and Scrutiny describes the way Merton's scrutiny councillors hold the Council's Executive (the Cabinet) to account to make sure that they take the right decisions for the Borough. Scrutiny panels also carry out reviews of Council services or issues to identify ways the Council can improve or develop new policy to meet the needs of local people. From May 2008, the Overview & Scrutiny Commission and Panels have been restructured and the Panels renamed to reflect the Local Area Agreement strategic themes.

Scrutiny's work falls into four broad areas:

- ⇒ **Call-in:** If three (non-executive) councillors feel that a decision made by the Cabinet is inappropriate they can 'call the decision in' after it has been made to prevent the decision taking immediate effect. They can then interview the Cabinet Member or Council Officers and make recommendations to the decision-maker suggesting improvements.
- ⇒ **Policy Reviews:** The panels carry out detailed, evidence-based assessments of Council services or issues that affect the lives of local people. At the end of the review the panels issue a report setting out their findings and recommendations for improvement and present it to Cabinet and other partner agencies. During the reviews, panels will gather information, evidence and opinions from Council officers, external bodies and organisations and members of the public to help them understand the key issues relating to the review topic.
- ⇒ **One-Off Reviews:** Panels often want to have a quick, one-off review of a topic and will ask Council officers to come and speak to them about a particular service or issue before making recommendations to the Cabinet.
- ⇒ **Scrutiny of Council Documents:** Panels also examine key Council documents, such as the budget, the Business Plan and the Best Value Performance Plan.

Scrutiny panels need the help of local people, partners and community groups to make sure that Merton delivers effective services. If you think there is something that scrutiny should look at, or have views on current reviews being carried out by scrutiny, let us know.

For more information, please contact the Scrutiny Team on 020 8545 4035 or by e-mail on [scrutiny@merton.gov.uk](mailto:scrutiny@merton.gov.uk). Alternatively, visit [www.merton.gov.uk/scrutiny](http://www.merton.gov.uk/scrutiny)



# Children and Young Person's Scrutiny Panel 15<sup>th</sup> March 2022

## Dr Dagmar Zeuner, Director of Public Health

Merton Public Health Intelligence

3<sup>rd</sup> March 2022

Enquiries: [Raqeebah.Agberemi@merton.gov.uk](mailto:Raqeebah.Agberemi@merton.gov.uk)

Please note: Due to the living with COVID plan released by government, many data sources will become unreliable or stop. This is the final Situational Awareness Report which will be produced by the Public Health team. We will continue internal monitoring especially of deaths, vaccination and hospitalisations, and have processes in place to resume the SAR should it be required

# Summary of COVID cases, PCR testing, deaths, vaccinations and inpatient statistics

Domain	Indicator	Merton (previous 7 days)	Merton change	London (previous 7 days)	London Change
<b>Regional marker</b>	R value (25 <sup>th</sup> February)	-	-	0.7 to 1.0 (0.8 to 1.1)	↓
<b>Cases over last week</b> (19 <sup>th</sup> – 25 <sup>th</sup> Feb)	New cases (week ending 25 <sup>th</sup> Feb)	673 (983)	↓	23,405 (33,711)	↓
	7 day rate (per 100,000)	406.9 (499.9)	↓	327.6 (391.5)	↓
	7 day rate in young people (0-29 years) per 100,000 (21 <sup>st</sup> Feb – 27 <sup>th</sup> Feb)	328.1 (431.3)	↓	287.2 (372.0)	↓
<b>Pillar 1 &amp; 2 PCR tests over 7 days</b> (10 <sup>th</sup> – 16 <sup>th</sup> Feb)	Number of people tested	6,113 (7,441)	↓	264,548 (336,551)	↓
	Test positivity %*	11.6% (13.6%)	↓	9.6% (11.1%)	↓
	Testing rates are highest in 25-29 years (21 <sup>st</sup> Feb – 27 <sup>th</sup> Feb)	2970.8 (1278.1)	↑	N/A	---
	Testing rates are lowest in 0-4 years (21 <sup>st</sup> Feb – 27 <sup>th</sup> Feb)	704.3 (594.2)	↑	N/A	---
<b>Deaths</b> (12 <sup>th</sup> Feb – 18 <sup>th</sup> Feb)	Number of COVID-19 registered deaths	2 (1)	↑	71 (100)	↓
<b>Vaccinations</b> (as of 2 <sup>nd</sup> March)**	Vaccine uptake in 50+ year olds (% who have had 3 doses)	72.3% (72.1%)	↑	70.2% (70.0%)	↑
	Vaccine uptake in 12-15 year olds (% who have had at least 1 dose)	49.0% (48.7%)	↑	43.1% (42.8%)	↑
	Vaccine uptake in 16-17 year olds (% who have had at least 2 doses)	45.6% (45.5%)	↑	37.5% (37.4%)	↑
	Vaccine uptake in 18-24 year olds (% who have had 3 doses)	31.7% (31.3%)	↑	25.9% (25.5%)	↑
<b>Current inpatients in SWL hospitals</b> (as of 22 <sup>nd</sup> Feb)	COVID inpatients	458 (485)	↓	1,809 (2,031)	↓
	COVID patients in mechanical ventilator beds	11 (13)	↓	101 (119)	↓

Please note: reporting periods are based on the latest data available from different sources.

\*Test positivity refers to the percent of people that tested positive, therefore if someone had multiple tests or tested positive multiple times in a reporting week they are only counted once.

\*\*Denominator based on NIMS population.

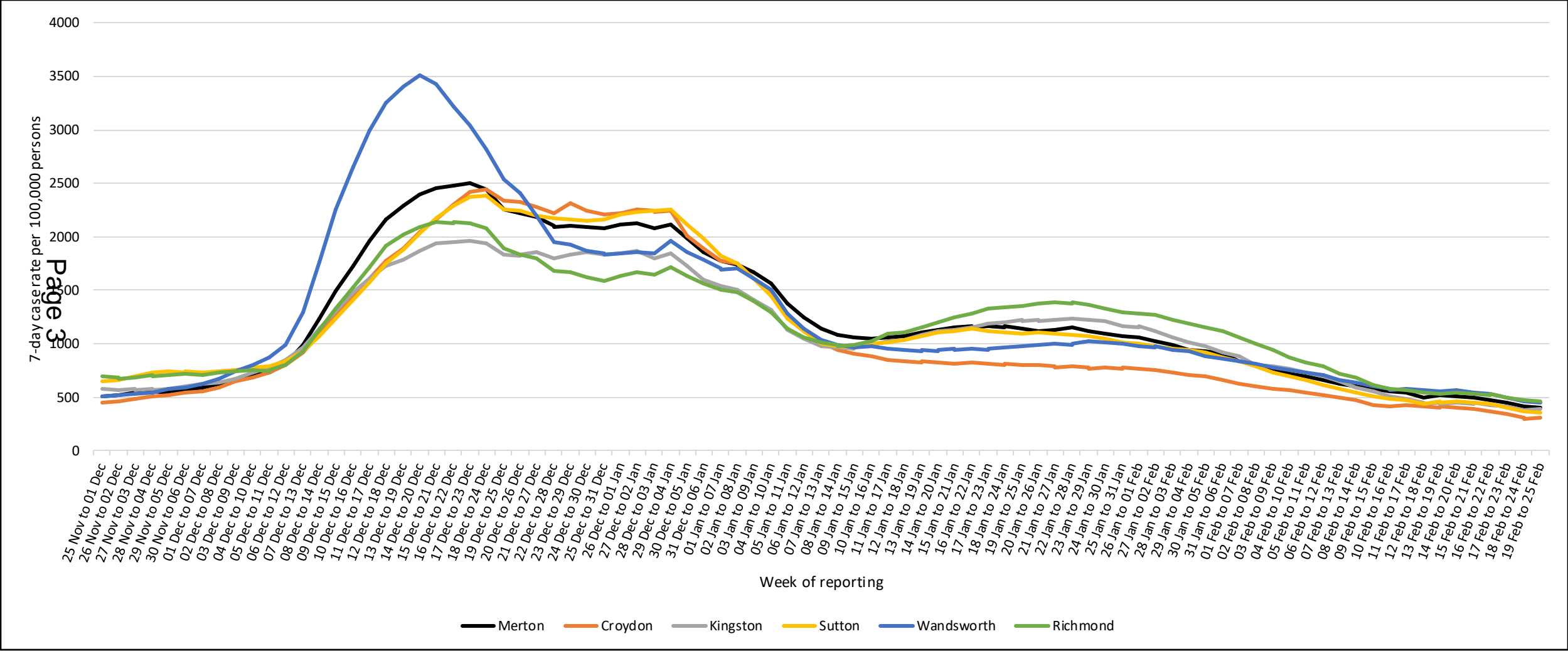
Data as of 2<sup>nd</sup> March; contains public sector information licensed under the Open Government Licence v3.0.

# Rolling 7-day case rate per 100,000 people in Merton compared to SW London boroughs

Source: Coronavirus (COVID-19) in the UK (<https://coronavirus.data.gov.uk/>)

Reporting frequency: Daily

**Key message:** Merton ranks 4 out of 6 for lowest case rate per 100,000 among SW London boroughs



Due to the recent change in reporting (as of 31<sup>st</sup> January 2022) there are an additional 8% of cases identified in Merton for the duration of the pandemic. The data now includes possible re-infections (people who test positive again after 90 days).

Enquiries: [Raqeebah.Agberemi@merton.gov.uk](mailto:Raqeebah.Agberemi@merton.gov.uk)

Data as of 3<sup>rd</sup> March (rates are presented up to and including 25<sup>th</sup> February). Contains public sector information licensed under the Open Government Licence v3.0.

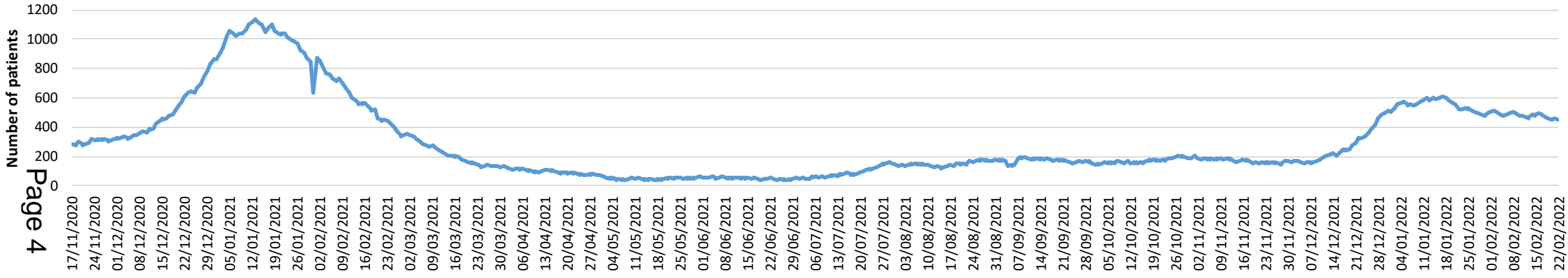
# COVID-19 hospital indicators for South West London

Source: Coronavirus (COVID-19) in the UK (<https://coronavirus.data.gov.uk/>)

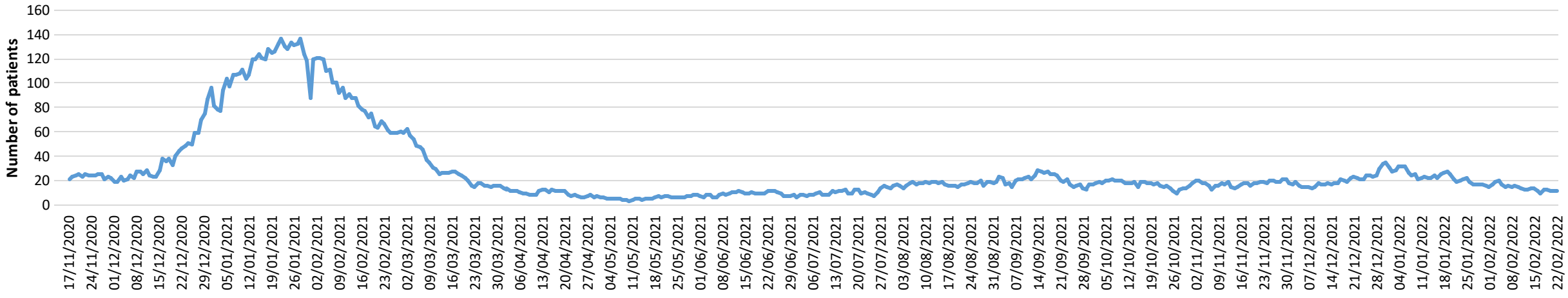
Reporting frequency: daily but inconsistent updates

**Key message:** The number of confirmed COVID-19 inpatients and the number of ventilated patients remains steady

### Confirmed COVID-19 inpatients in Southwest London NHS trust hospitals (Daily count of confirmed COVID-19 patients in hospital at 8am)



### Confirmed number of COVID-19 inpatients in mechanical ventilator beds in Southwest London NHS trusts



Data up to and including 22<sup>nd</sup> February. Contains public sector information licensed under the Open Government Licence v3.0.

Page 4

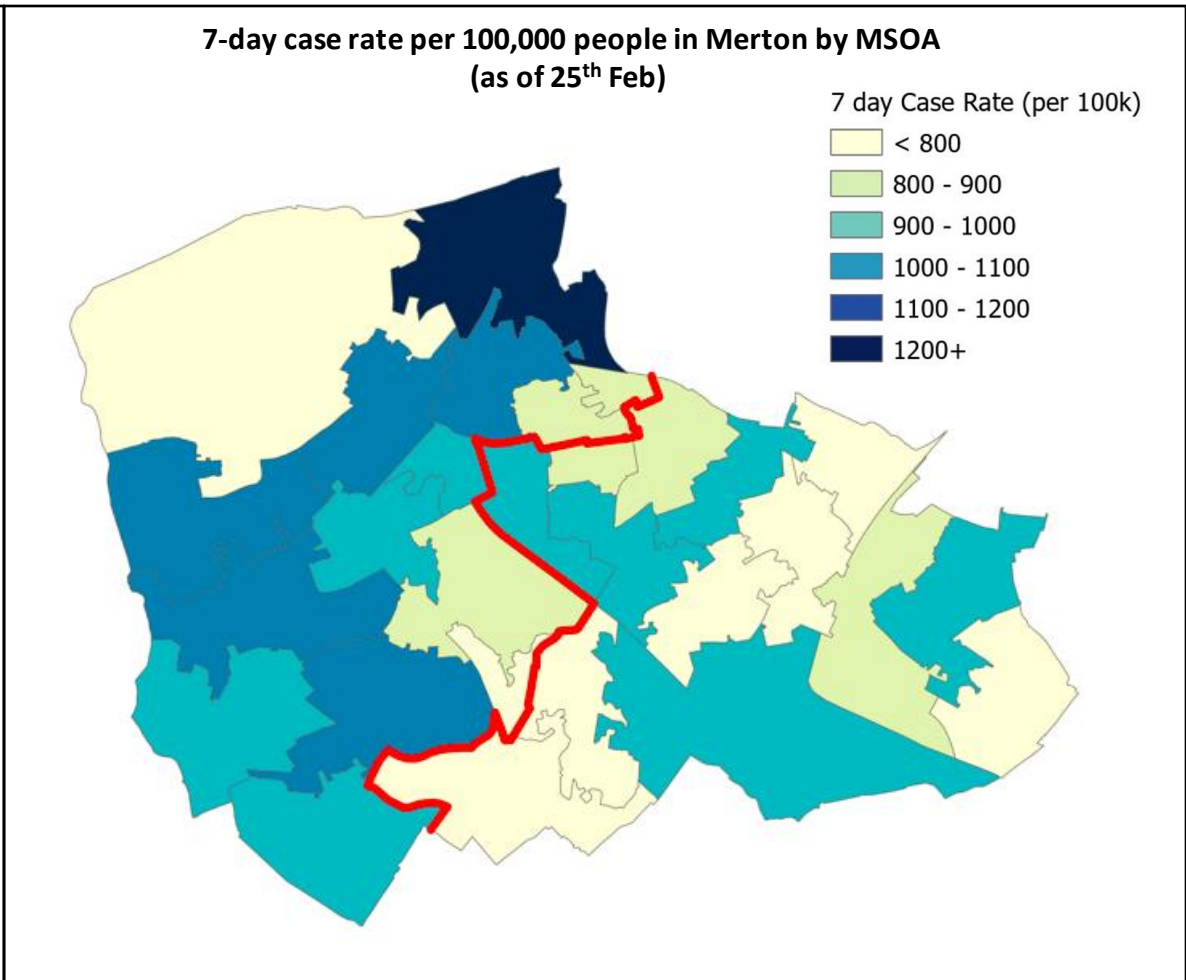
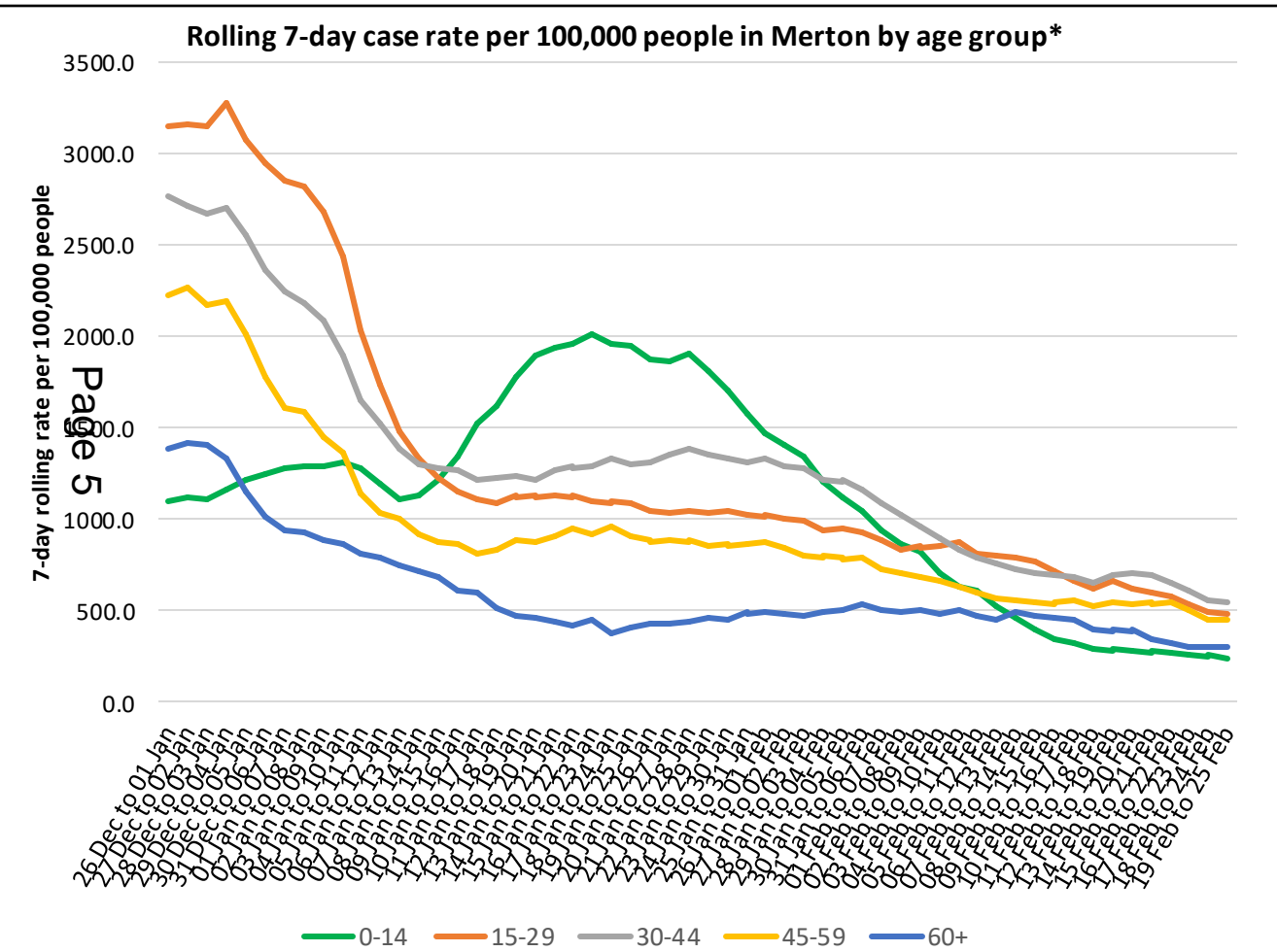


# COVID-19 cases in Merton by age and geography

Source: Coronavirus (COVID-19) in the UK (<https://coronavirus.data.gov.uk/>)

Reporting frequency: daily

**Key message:** case rates are highest among 15-29 years and 30-44 years and are higher in west versus east Merton

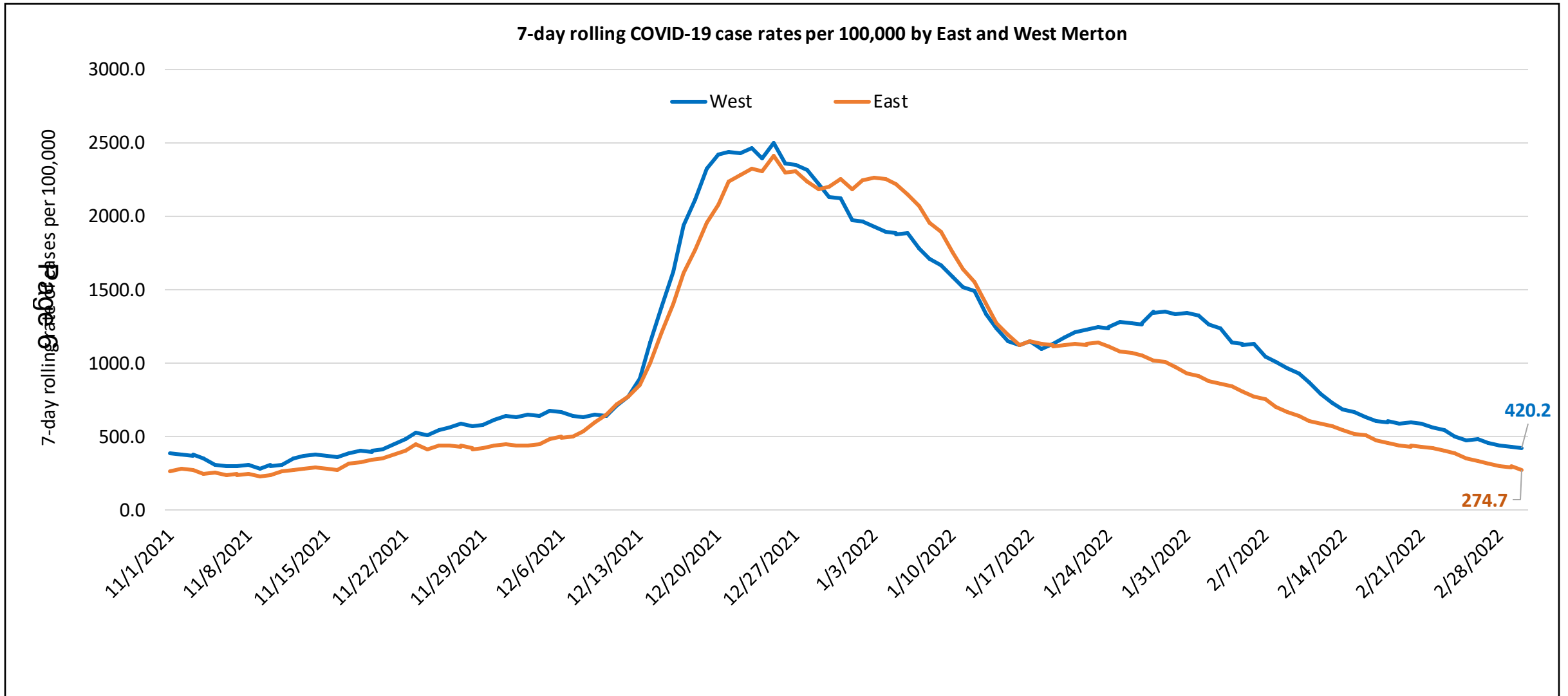


\*Rolling 7-day case rate per 100,000 is calculated using the number of people testing positive (source: Coronavirus (COVID-19) in the UK; <https://coronavirus.data.gov.uk/>) and Merton population estimates (source: GLA Housing-led identified capacity model estimates for 2021).

# COVID-19 7-day case rates in East and West Merton

Source: UKHSA Covid-19 Situational Awareness Explorer

Reporting frequency: daily

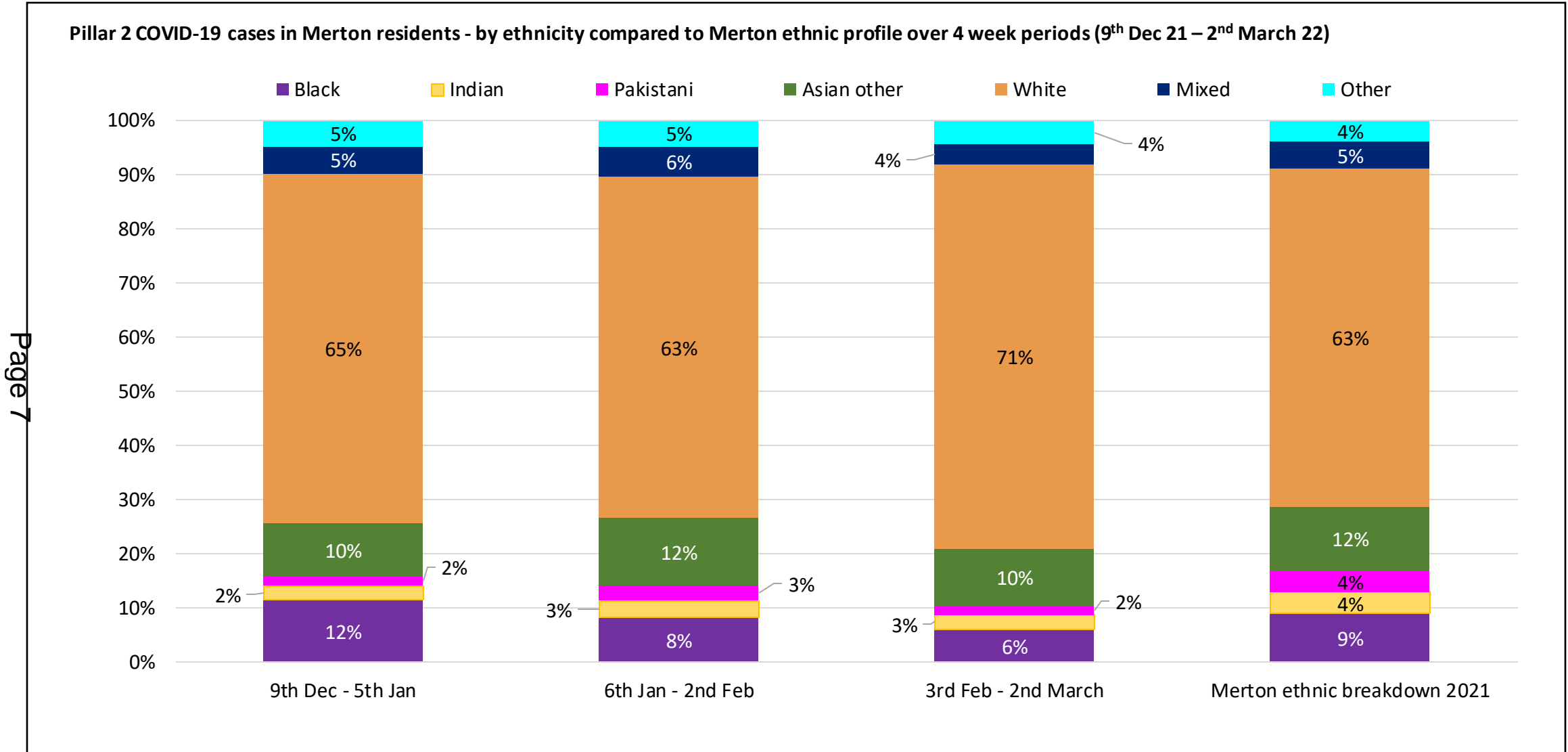


Due to the recent change in reporting (as of 31<sup>st</sup> January 2022) there are an additional 8% of cases identified in Merton for the duration of the pandemic. The data now includes possible re-infections (people who test positive again after 90 days).

Data as of 3<sup>rd</sup> March (rates are presented up to and including 2<sup>nd</sup> March)

# COVID-19 cases in Merton by ethnicity

Source: UKHSA Covid-19 Situational Awareness Explorer  
Reporting frequency: daily



Page 7

Due to the recent change in reporting (as of 31<sup>st</sup> January 2022) there are an additional 8% of cases identified in Merton for the duration of the pandemic. The data now includes possible re-infections (people who test positive again after 90 days).

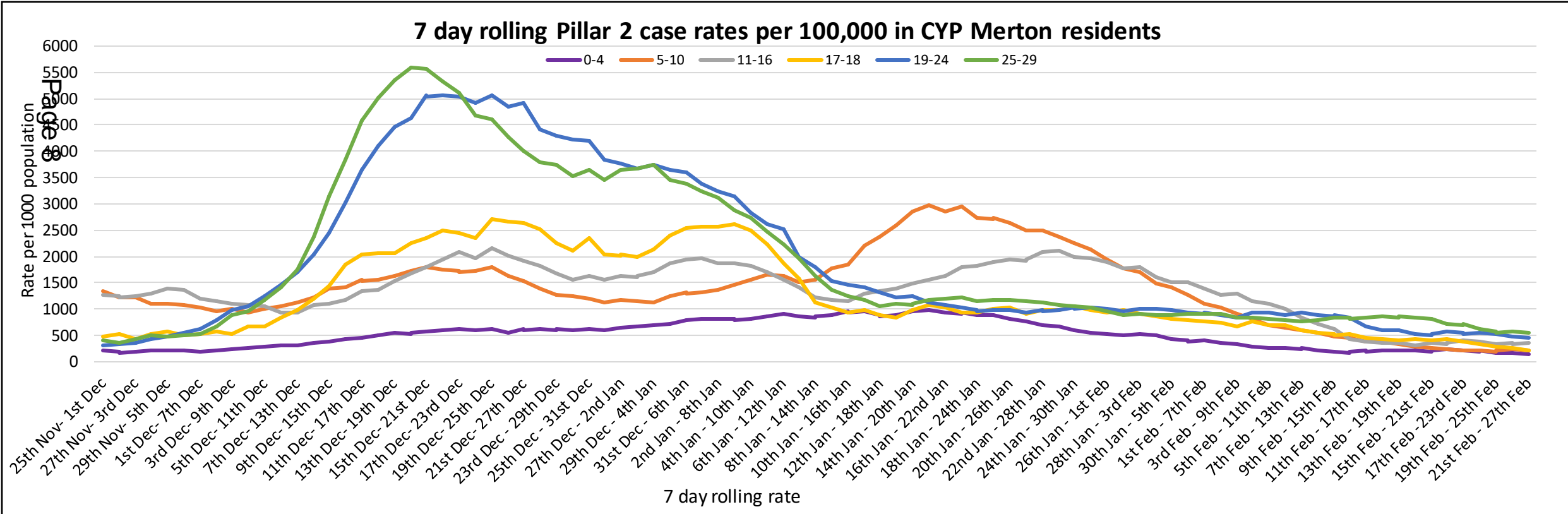
# COVID case rates by age group in Children and Young People in Merton (residents)

Source: UKHSA Covid-19 Situational Awareness Explorer and GLA population estimates

- Key Messages**
- In recent weeks rates have decreased in all CYP age groups.
  - Recently, the highest rates can be seen in 19-24 and 25-29 year olds compared to other CYP age groups.

**Case rates per 100,000 population in CYP specific age groups in Merton (numbers in brackets)**

Week ending	0-4 yrs	5-10 yrs	11-16 yrs	17-18 yrs	19-24 yrs	25-29 yrs
27/02/2022	154.1 (21)	225.0 (37)	349.3 (56)	200.4 (*)	446.7 (47)	538.9 (78)
20/02/2022	205.4 (28)	218.9 (36)	280.6 (45)	356.3 (16)	456.2 (48)	704.7 (102)
13/02/2022	256.8 (35)	602.1 (99)	841.9 (135)	601.2 (27)	921.8 (97)	773.8 (112)



Rolling 7-day case rate per 100,000 is calculated using the number of people testing positive (source: UKHSA Covid-19 Situational Awareness Explorer and Merton population estimates (source: GLA Housing-led identified capacity model estimates for 2021).

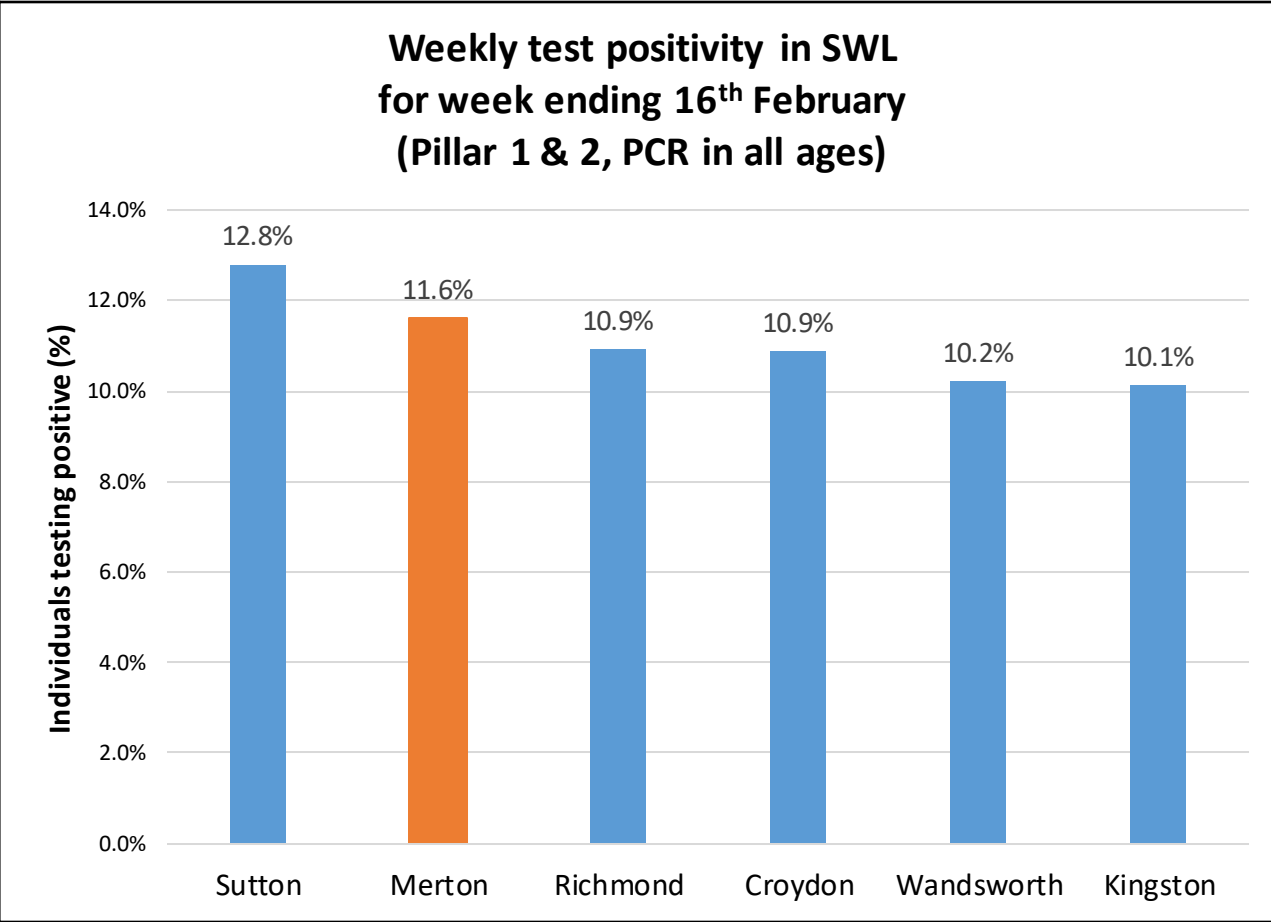
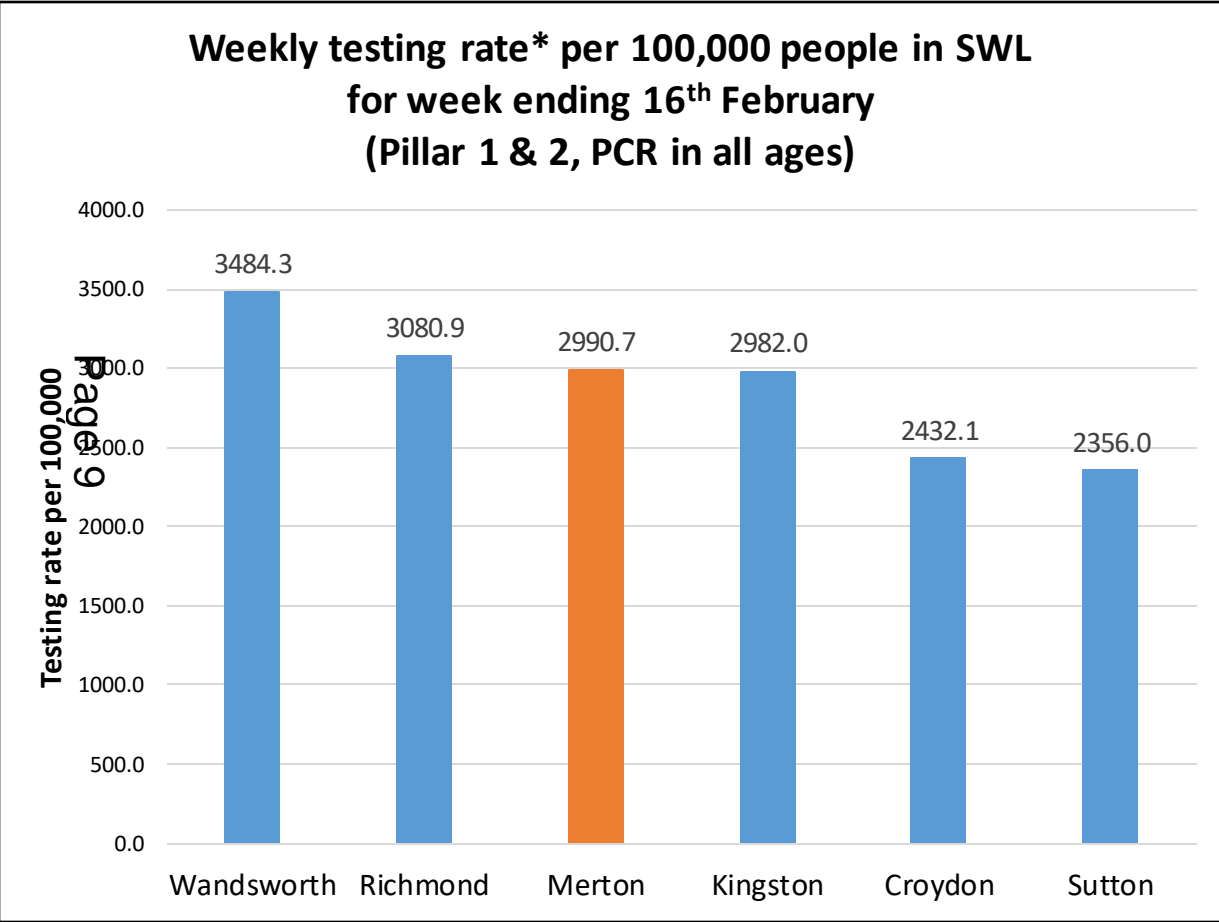
\*This value has been suppressed due to small numbers.

# COVID-19 testing & positivity in Merton compared to SW London boroughs

Source: UKHSA Weekly statistics for NHS Test and Trace (<https://www.gov.uk/government/collections/nhs-test-and-trace-statistics-england-weekly-reports>)

Reporting frequency: weekly

**Key message:** Merton ranks 3 out of 6 for testing rate per 100,000 people and 2 out of 6 for highest test positivity compared to SWL boroughs

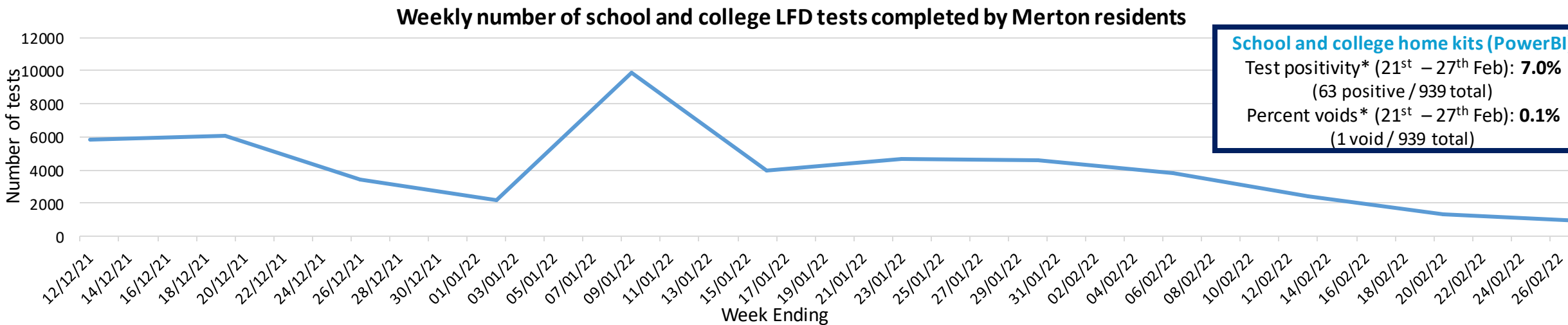
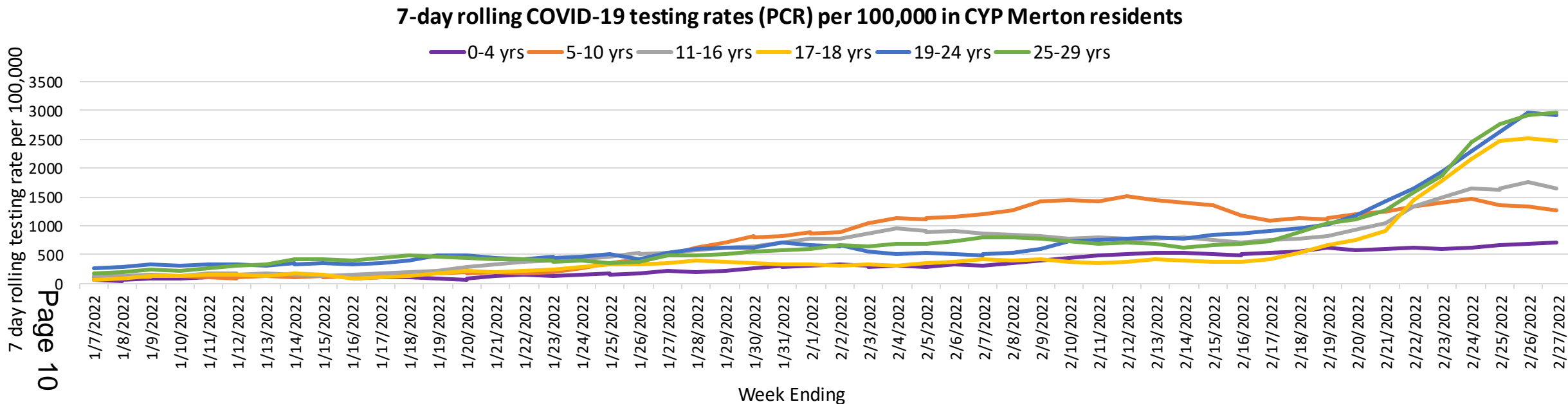


\*Testing rate per 100,000 is calculated using the number of people tested (source: UKHSA weekly statistics for NHS Test and Trace report) and SWL borough population estimates (source: GLA Housing-led identified capacity model estimates for 2021).

Please note both the test rates and positivity presented on this slide are person-based, not test-based (if someone had multiple tests or tested positive multiple times in a reporting week they are only counted once).

# COVID testing rates and LFD tests in Children and Young People in Merton (residents)

Source: UKHSA Covid-19 Situational Awareness Explorer and GLA population estimates



Testing rate per 100,000 is calculated using the number of tests (source: UKHSA Covid-19 Situational Awareness Explorer) and Merton population estimates (source: GLA Housing-led identified capacity model estimates for 2021). Individuals may have multiple tests.

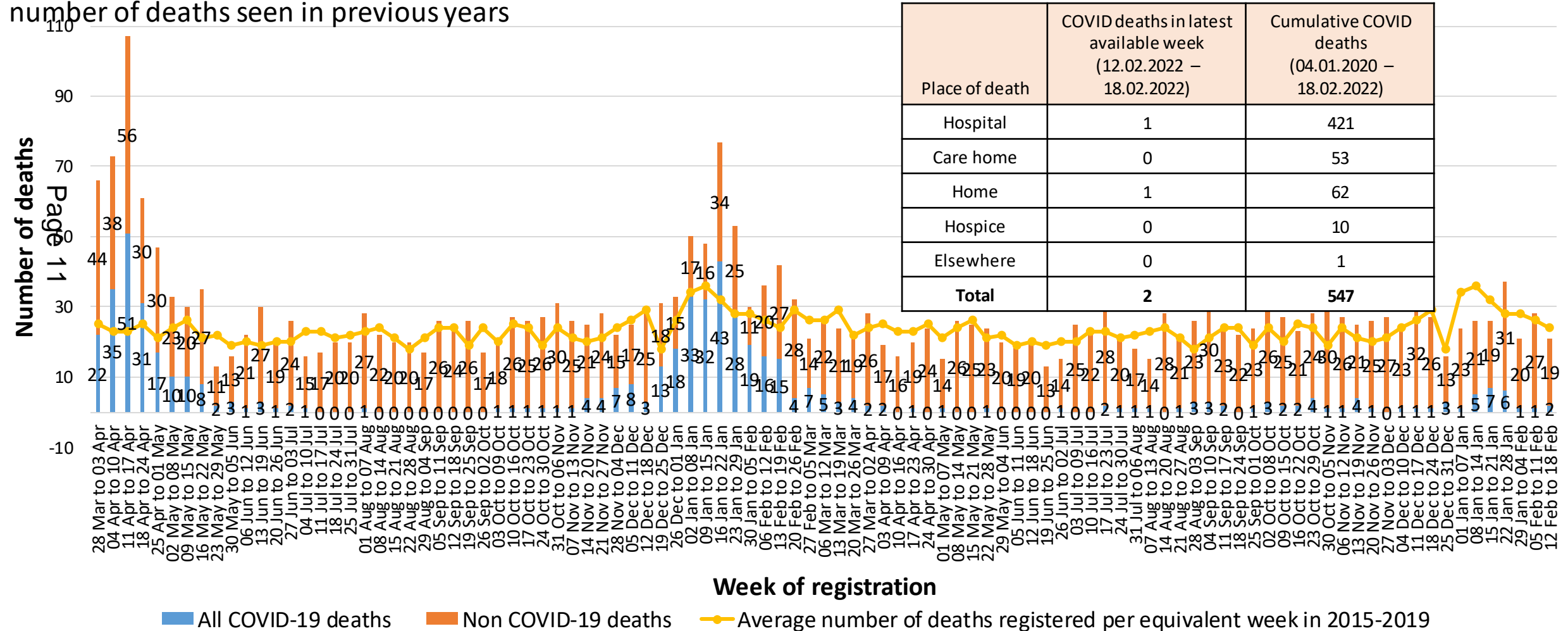
# Number of deaths of Merton residents by week of registration

Source: ONS death registrations and occurrences by local authority and health board

<https://www.ons.gov.uk/peoplepopulationandcommunity/healthandsocialcare/causesofdeath/datasets/deathregistrationsandoccurrencesbylocalauthorityandhealthboard>

Reporting frequency: Weekly

**Key message:** There was a slight increase in COVID-19 deaths registered during January though this did not exceed the average number of deaths seen in previous years



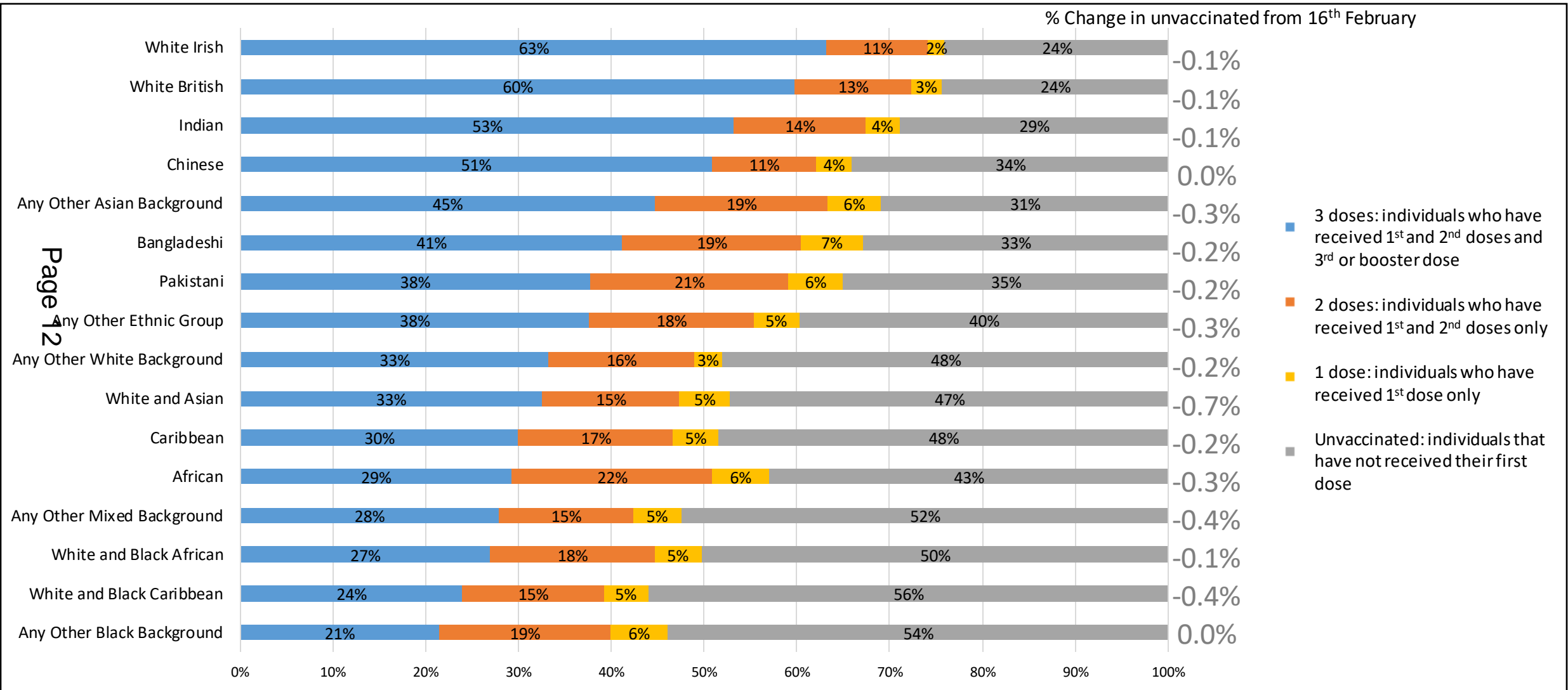


# COVID-19 vaccination uptake by ethnicity

Source: UKHSA Covid-19 Situational Awareness Explorer

Reporting frequency: Daily

**Key message:** The unvaccinated population has continued to decrease across all ethnic groups



Page 12

Data using NIMS population for 12+ year olds as the denominator.

Data as of 2<sup>nd</sup> March



# COVID-19 vaccination uptake by age group and geography

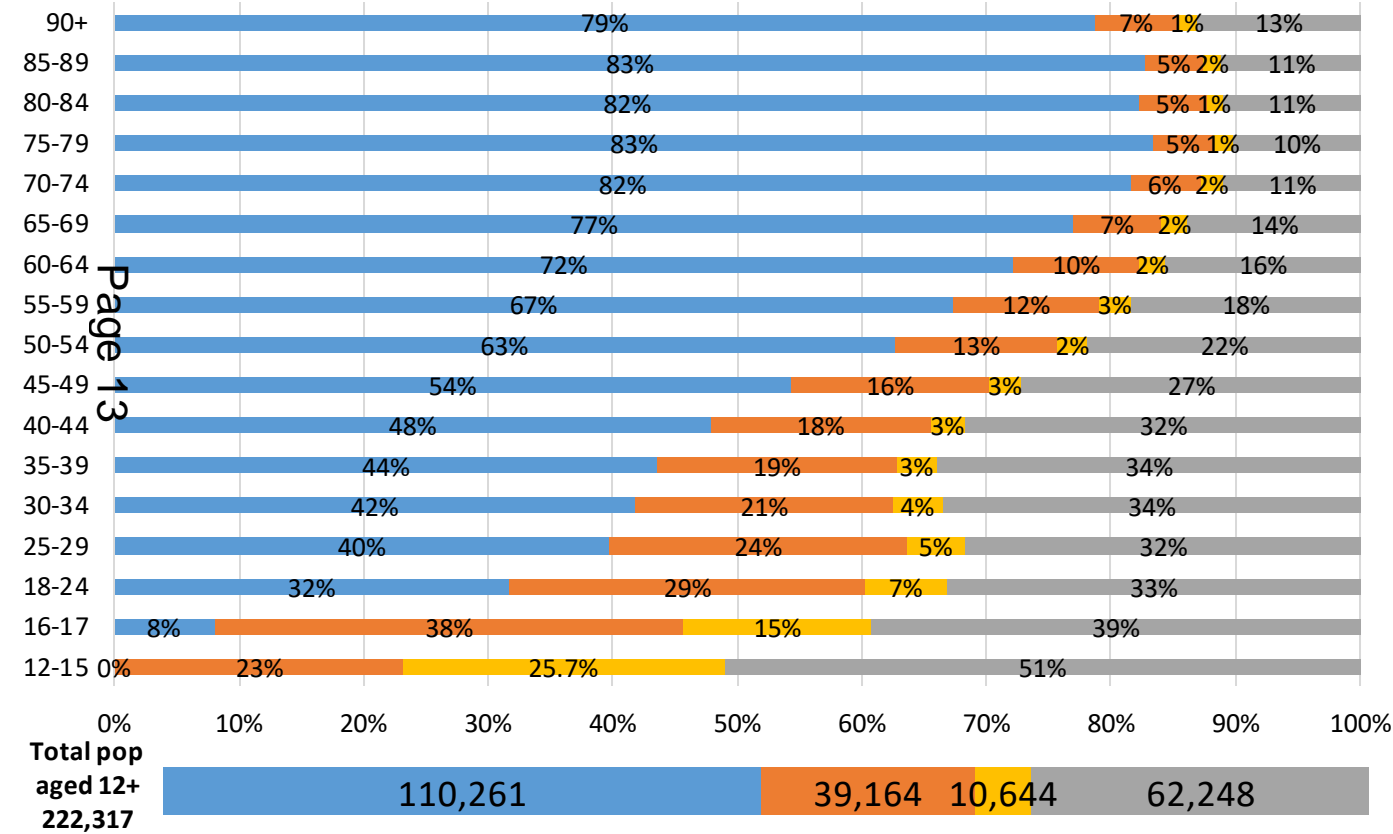
Source: Coronavirus (COVID-19) in the UK (<https://coronavirus.data.gov.uk/>) and NHS England COVID-19 vaccinations report (<https://www.england.nhs.uk/statistics/statistical-work-areas/covid-19-vaccinations/>)

Reporting frequency: Weekly

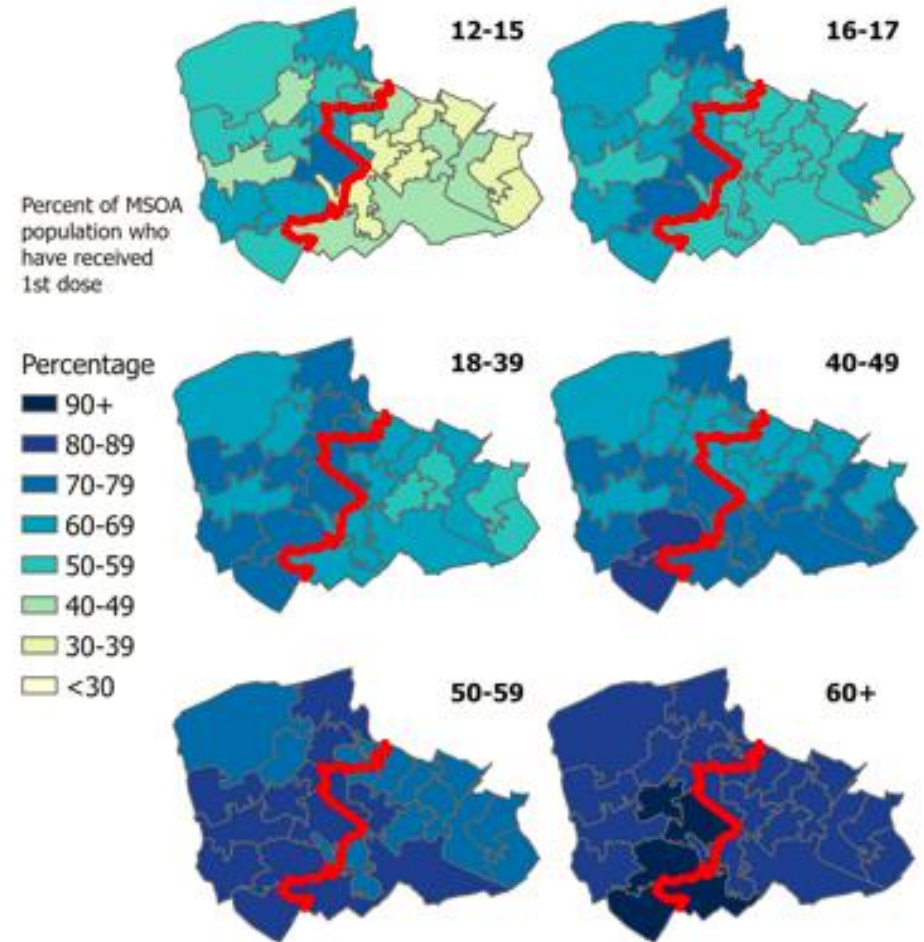
**Key message:** Vaccination uptake is lowest among younger age groups

**Vaccine uptake by age band among Merton residents\* (as of 1st March)**

■ 3 doses ■ 2 doses ■ 1 dose ■ Unvaccinated



**Percentage of Merton residents by age group and MSOA that have received at least 1 dose of Covid-19 vaccination**



\*Data using NIMS population as denominator. 3 doses: individuals who have received 1<sup>st</sup> and 2<sup>nd</sup> doses and 3<sup>rd</sup> or booster dose. 2 doses: individuals who have received 1<sup>st</sup> and 2<sup>nd</sup> doses only. 1 dose: individuals who have received 1<sup>st</sup> dose only. Unvaccinated: individuals that have not received their first dose. Fewer than 1% of 12-15 year olds have received a booster dose.

# Schools overview in Merton

## Schools Spring term:

- As of 22nd February, staff in educational settings and pupils in year 7 and above are no longer required to do twice weekly (asymptomatic) lateral flow device (LFD) testing. However, regular testing will continue in special educational needs (SEN) settings.
- As with the wider population, children and young people (CYP) are: 1) advised to follow public health advice - self-isolate and get a PCR test if symptomatic until 31st March; after this date, it is envisaged that people will treat and manage COVID like other respiratory infections such as flu, so CYP are advised to stay at home if unwell with any symptoms 2) no longer required to isolate if they are a close contact.
- Merton Public Health team have built excellent partnership with schools over the pandemic; we will continue to support early years and educational settings through this transition period through our routine channels and our COVID Resilience Programme. We will continue to support settings with outbreak management.

## Outbreaks

- In the New Year, we saw a significant increase in outbreaks in schools, thankfully this has not been the case since returning from February half term holiday – cases/outbreaks reported have been low in comparison. Schools have developed skills in outbreak management and are more confident in managing these. We will continue supporting schools especially SEN settings.

## Vaccination

- Community engagement has been our main vehicle in increasing vaccination uptake. Going forward, our newly funded, COVID vaccination champion programme consisting of 1) network of community champions 2) on-street engagement 3) better access to clinical staff for answering to any queries on vaccination, will strengthen engagement for all age groups including CYP.
- Vaccinations for 5-11 year olds at high risk has commenced. However, from April 2022 all healthy 5-11 year olds will be eligible for their first COVID jab. This will be available at mass sites, pharmacy sites and the Wilson Hospital. There are also plans for a school hub service.
- Healthy 12-17 year olds are recommended to have 2 doses of Covid-19 vaccination – roll out of the second dose for 12-15 year olds started in January. Second doses will be offered 12 weeks after the first dose or 12 weeks from testing positive for Covid-19.
- Booster vaccination for 16-17 year olds are now available and will be offered 12 weeks after 2<sup>nd</sup> dose.
- Healthy 12-15 year olds living with a severely immunosuppressed household contact: Recommended to have first and second doses of the Covid-19 vaccine 8 weeks apart. They are also recommended to have boosters.
- 12+ year old at high risk: Recommended to have first, second and third dose and the booster vaccine. Booster vaccination can be offered 3 months after third dose.